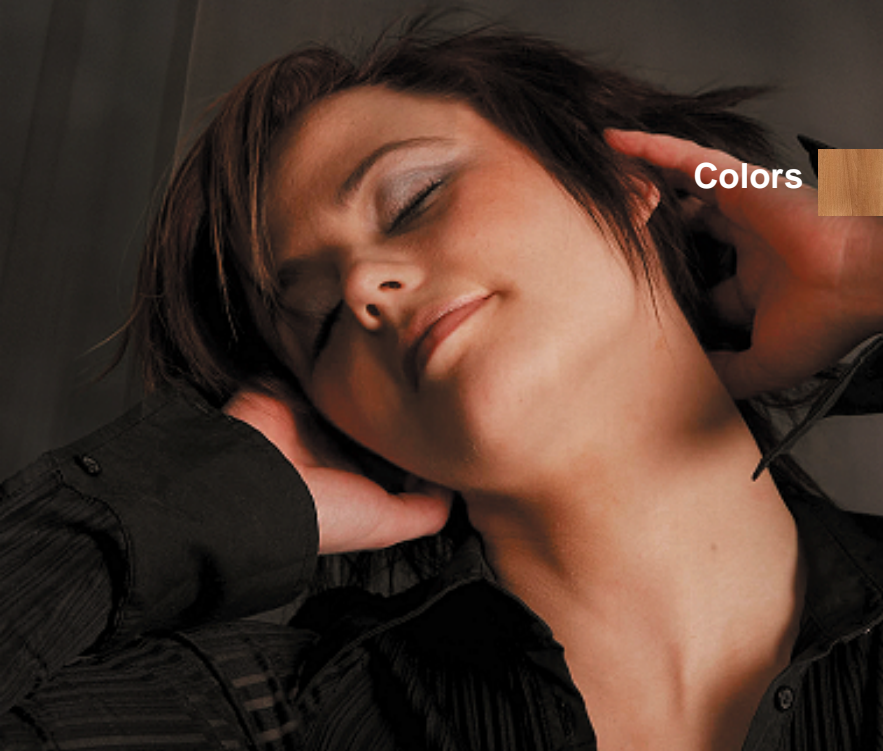


A novelty!



# OR-C302 Xi



Colors 



[www.or-loudspeakers.fi](http://www.or-loudspeakers.fi)

## OR-C302 Xi

Freq.response  
Impedance

2-way closed  
70...20000 Hz  
6 Ohm

### Powerhandling

Music (short term)  
Continous (long term)  
Crossover frequencies  
Recommended  
amplifier power  
Magnetic shielding  
Sensitivity  
Approximate max spl  
2,5m-dB

125 W  
65 W  
2500 Hz  
20-100 W  
Yes  
86 dB  
99 dB

Sizes (H,W,D)  
Volume  
Finish

129 mm x 352 mm x 175 + 12 mm  
5 l  
Amati (EAN: 6416716103258)

Packaging

One piece in a carton

